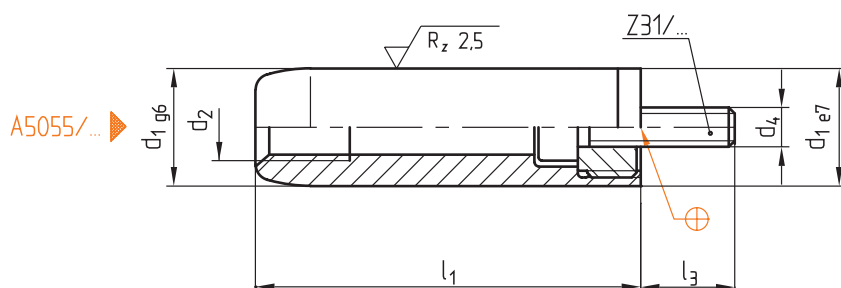


Z015/...

Mat.: ≈ 1.0401/690 + 70 HV 30



			Ø			Ø		
d ₂	d ₄	l ₃	d ₁	l ₁	Nr./No.	d ₁	Nr./No.	
M 6	M 4	11	14	50	Z015/14x 50	15	Z015/15x 50	
				60	60		60	
				70	70		70	
				80	80		80	
				90	90		90	
M 8	M 6	13	18	60	Z015/18x 60	20	Z015/20x 60	
				70	70		70	
				80	80		80	
				90	90		90	
				100	100		100	
M10	M 8	15	22	70	Z015/22x 70	24	Z015/24x 70	
				80	80		80	
				90	90		90	
				100	100		100	
				120	120		120	
M12	M10	17	30	80	Z015/30x 80	32	Z015/32x 80	
				90	90		90	
				100	100		100	
				120	120		120	
				140	140		140	

This is trial version
www.adultpdf.com